

MyLabsPlus Backdoor Login

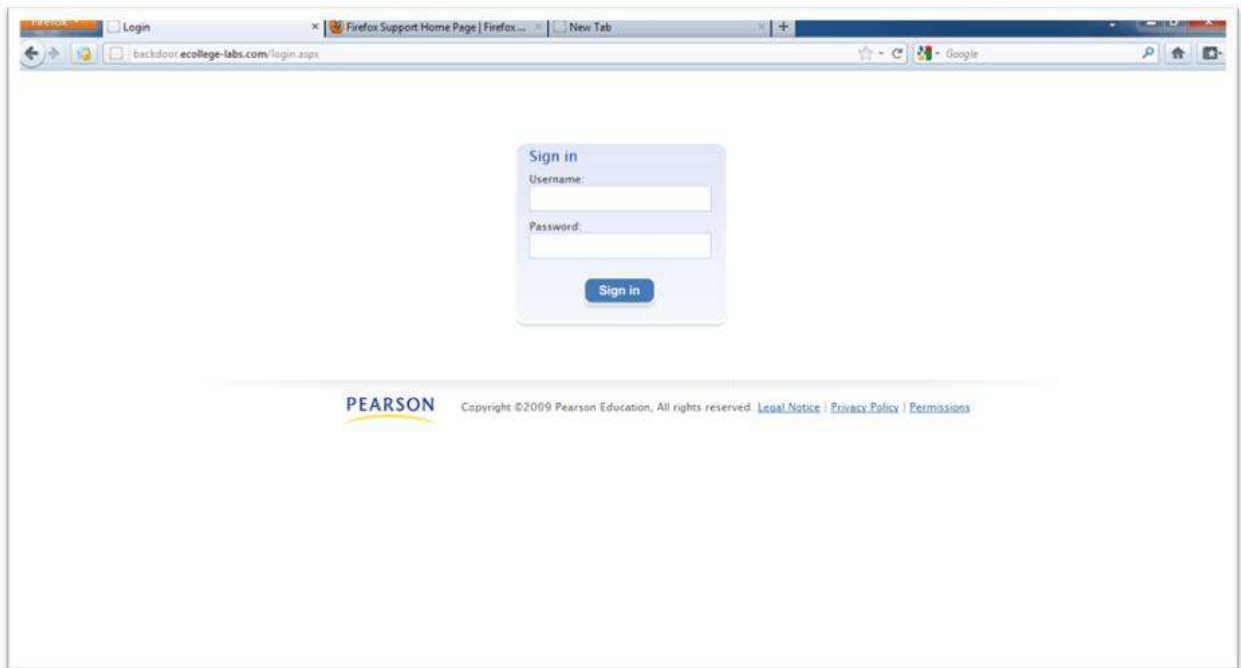
January 26, 2012

Instructions for Use

URL and Account Information

<https://access.mylabsplus.com/login.aspx?lab=Math&inst=uark>

1. The student should sign in with their normal MyLabsPlus (eCollege) campus credentials using the username and password fields on the page. See below.



The screenshot shows a Firefox browser window with the address bar displaying "backdoor-ecollege-labs.com/login.aspx". The page content features a central "Sign in" box with the following elements:

- Title: "Sign in"
- Label: "Username:" followed by a text input field.
- Label: "Password:" followed by a password input field.
- Button: "Sign in"

Below the login box, the Pearson logo is visible on the left, and the footer text on the right reads: "Copyright ©2009 Pearson Education, All rights reserved. [Legal Notice](#) | [Privacy Policy](#) | [Permissions](#)".

You will briefly see a waiting message.



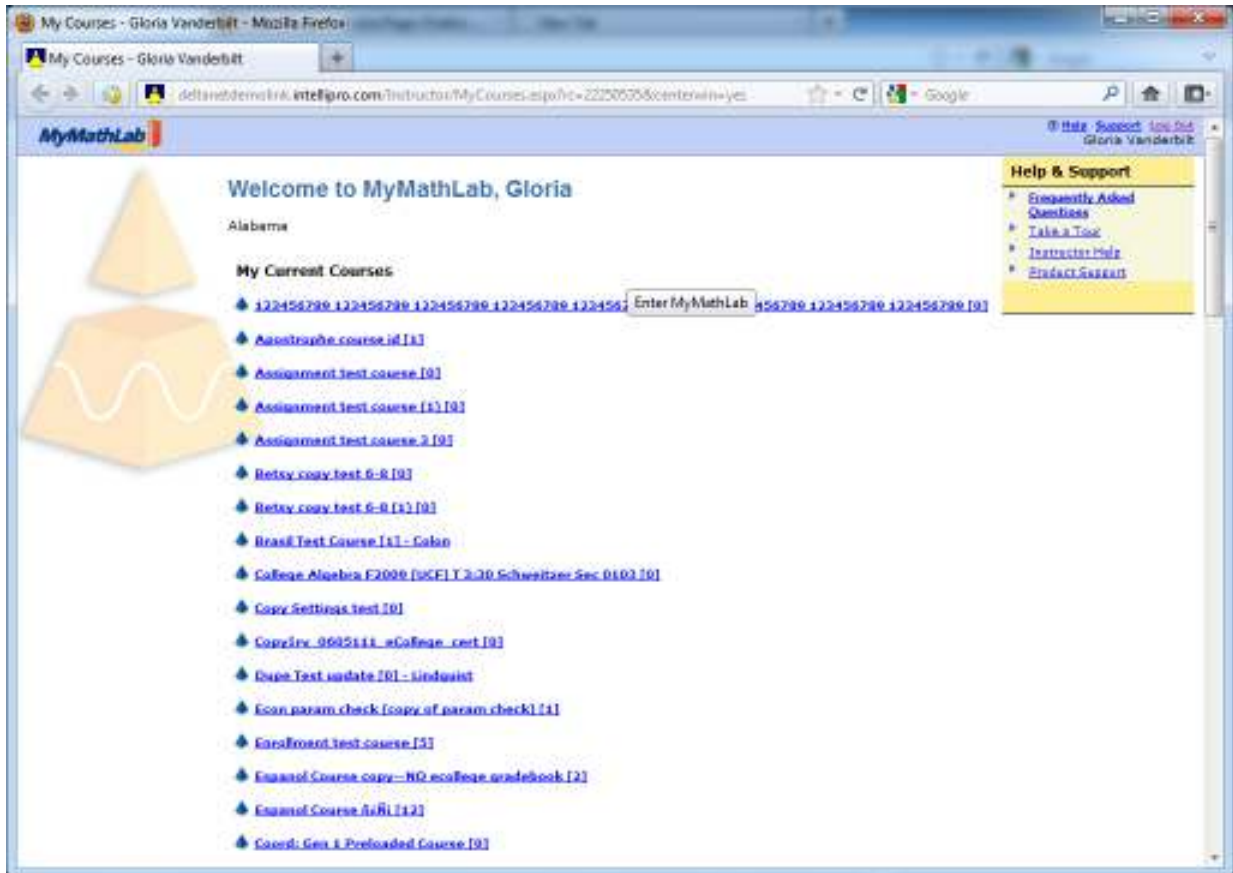
2. Upon successful validation of your credentials, you will see the Welcome page of MyMathLab. Click on the “Enter MyMathLab” button.

NOTE: The button for “Back to My MathLab Log in” will not take you back to the MyLabsPlus campus or the Backdoor Access page. Do not use it.

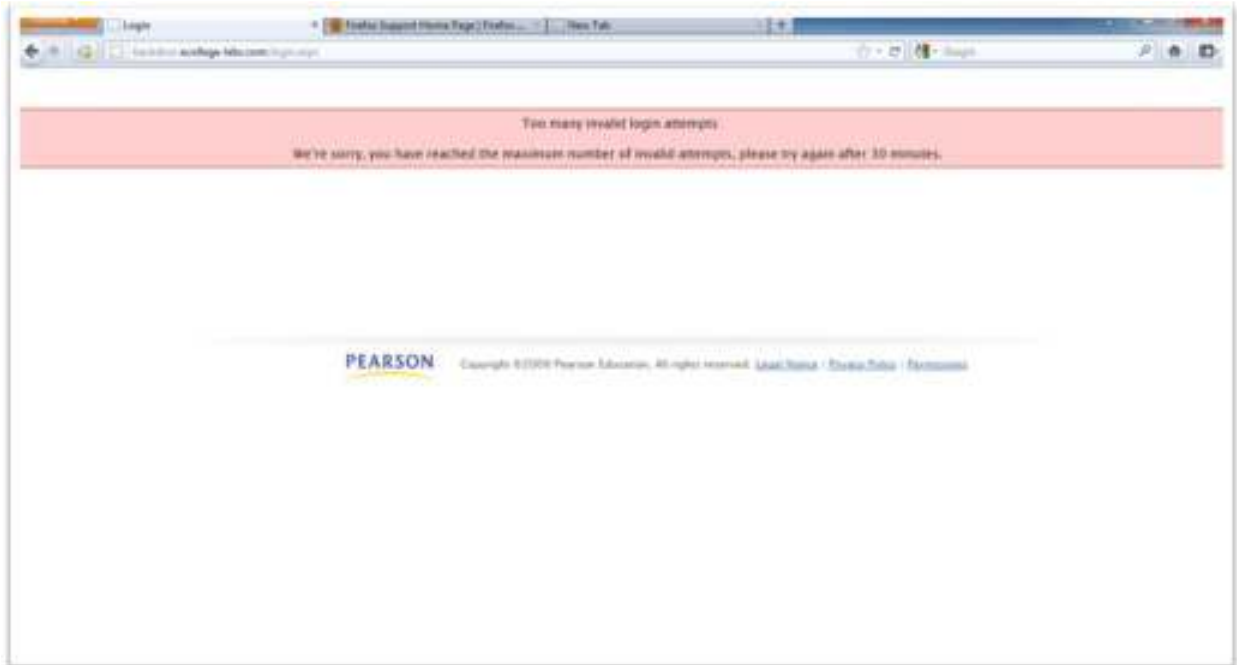


3. Once you click on the link, you will see all of the XL courses the system you are enrolled in.

NOTE: These will be for courses you have already initialized in MyLabsPlus by connecting to the MyLab from within the course during the normal course usage.



4. If your credentials were incorrect, you are given 7 attempts to try again; if you fail all 7 times, you will get this page:



Known Issues:

Some older accounts may experience issues, due to expired SMS modules. They'll see the error shown below when they click on the XL course link. These instructors should contact helpdesk to have their SMS accounts adjusted.

